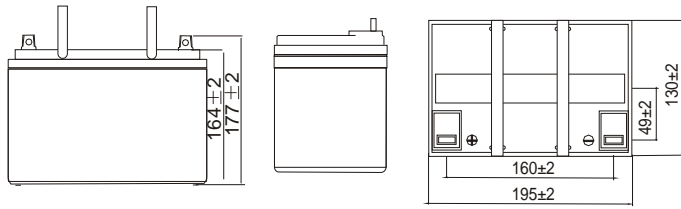
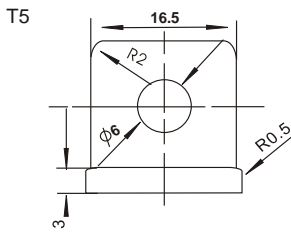


Dimensions (mm)



Standard Terminal (mm)



Physical Specification

Nominal Voltage		12V
Nominal Capacity (20HR)		35AH
Dimension	Length	195 ± 2mm
	Width	130 ± 2mm
	Container Height	164 ± 2mm
	Total Height (with Terminal)	177 ± 2mm
Weight		Approx 11.2kg
Standard Terminal		T5

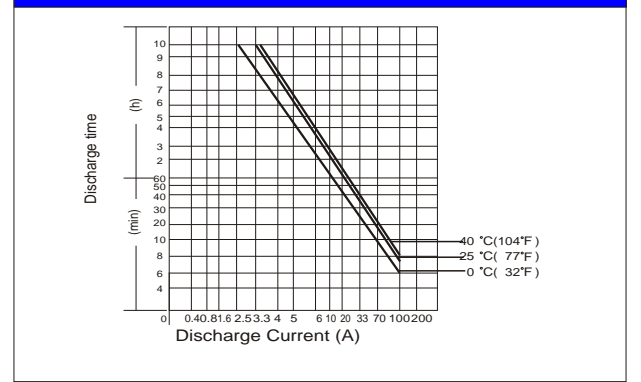
Electrical Specification

Rated Capacity	20 hour rate (1.75A)	35.0AH	Constant-Voltage	Cycle	Initial Charging Current less than 10.5A. Voltage 14.4V- 15.0V at 25°C (77°F) Temp. Coefficient -30mV/°C
	10 hour rate (3.30A)	33.0AH			
	5 hour rate (6.10A)	30.5AH			
	1 hour rate (21.45A)	21.45AH			
Capacity affected by Temperature	40°C (104°F)	103%	Charge	Standby	No limit on Initial Charging Current Voltage 13.5V-13.8V at 25°C(77°F) Temp. Coefficient - 20mV/°C
	25°C (77°F)	100%			
	0°C (32°F)	86%			

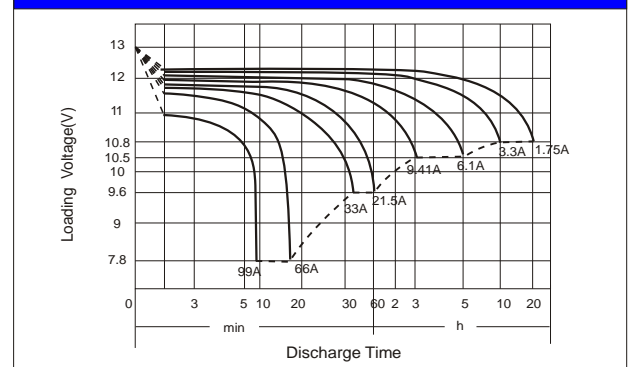
PS-12350 12V 35AH



Discharging Current & Discharge Duration Time



Discharge Characteristics (25°C, 77°C)



Constant Current Discharge Characteristics Unit: Amperes (25°C, 77°F)

F.V/Time	5MIN	10MIN	15MIN	30MIN	1HR	2HR	3HR	4HR	5HR	8HR	10HR	20HR
1.60V	148.4	91.5	68.9	40.0	23.0	12.83	8.88	6.83	5.58	3.83	3.21	1.876
1.67V	138.0	87.5	66.2	39.0	22.5	12.58	8.67	6.63	5.46	3.75	3.17	1.833
1.70V	132.8	85.3	65.0	38.5	22.4	12.50	8.58	6.54	5.42	3.71	3.13	1.792
1.75V	123.1	81.8	63.0	37.5	22.1	12.33	8.42	6.42	5.29	3.67	3.08	1.750
1.80V	113.4	77.5	60.2	36.5	21.8	12.13	8.25	6.25	5.21	3.63	3.04	1.750
1.85V	102.2	72.5	57.2	35.2	21.4	11.96	8.13	6.13	5.08	3.58	2.96	1.667

Constant Power Discharge Characteristics Unit: Watts (25°C, 77°F)

F.V/Time	5MIN	10MIN	15MIN	30MIN	1HR	2HR	3HR	4HR	5HR	8HR	10HR	20HR
1.60V	1501	1021.0	761.6	449.3	268.4	157.0	110.9	86.5	71.9	49.0	40.8	22.4
1.67V	1415	980.4	738.8	440.6	264.9	154.5	109.7	85.5	70.9	48.3	40.3	22.0
1.70V	1377	961.7	726.7	436.8	263.1	153.7	109.0	85.0	70.5	48.0	39.8	21.8
1.75V	1306	924.2	707.9	429.7	260.1	151.7	107.9	84.0	69.7	47.5	39.5	21.5
1.80V	1229	886.3	685.8	421.4	257.1	149.7	106.6	82.9	68.9	47.1	39.2	21.1
1.85V	1148	840.5	660.0	412.6	253.5	147.3	105.2	81.7	68.0	46.7	38.7	20.6



Power-Sonic Europe Limited
 3 Buckingham Square, Wickford, Essex, SS11 8YQ
 Tel: +44 (0)1268 560686 Fax: +44 (0)1268 560902
 sales@power-sonic.co.uk
 www.power-sonic.co.uk